

KAN MOVE

Estate Agents

4 bed Detached House for sale - £229,950

Northbridge Park - Bishop Auckland



Four bedroom detached house Superbly presented and updated by the current owners to a high standard, with many highly commendable features to offer including tiled under floor heating to the ground floor, Nest heating Control, Security Alarm, New fitted Gas Boiler, outstanding White Gloss kitchen and diner, ground floor Cloaks W/C, access to the single garage from the hallway, En-suite to



3 Bathrooms

4 Beds

- WELL PRESENTED FOUR BEDROOM DETACHED HOUSE
- SUPERB MODERN KITCHEN/DINER
- NEW FITTED GAS BOILER
- ENCLOSED GARDEN TO THE REAR
- EN-SUITE TO MAIN BEDROOM
- SINGLE GARAGE, DOUBLE DRIVEWAY

SCAN FOR DETAILS

Entrance Hallway

Hallway with Stairs to first floor, tiled flooring with under floor heating, Alarm Panel, door into the single garage, NEST heating control.

Ground Floor Cloaks W/C

Vanity unit, low level W/C

Kitchen/Diner 26' 0" x 10' 0" (7.92m x 3.05m)

White gloss matching wall and base units with drawers and work top surface with under integrated lighting, eye level Neff Oven and microwave, Neff induction hob and extractor hood, one and half bowl sink unit, jet spray mixer tap, Space for American Fridge Freezer, Wine rack, Feature Spot lights to the ceiling. Integrated dishwasher and washing machine, tiled flooring with under floor heating, cupboard housing the new fitted Baxi Boiler. Upvc Double glazed window to the rear. Composite rear door to garden. Dining room. Upvc Double glazed French doors to the rear garden from the dining room, tiled flooring with under floor heating

Diner

Lounge/Diner 16' 0" x 11' 0" (4.87m x 3.35m)

Upvc Double glazed window to the front

Bedroom One 12' 0" plus fitted Robes x 14' 0" (3.65m x 4.26m)

Upvc double glazed window to the front, Fitted Wardrobes, Door to En-Suite

En-Suite

Double Shower cubicle with shower off the mains

Bedroom Two 11' 0" x 13' 0" inc fitted Robes (3.35m x 3.96m)

Upvc Double glazed window to the rear.

Bedroom Three 10' 0" x 9' 0" (3.05m x 2.74m)

Upvc double glazed window to Front, storage cupboard.

Bedroom Four 9' 0" x 9' 0" (2.74m x 2.74m)

Upvc double glazed window to the rear, Fitted Wardrobes with dressing table.

Family Bathroom

White suite with bath, pedestal wash hand basin, low level W/C, Upvc double glazed window to the rear.

First Floor Landing

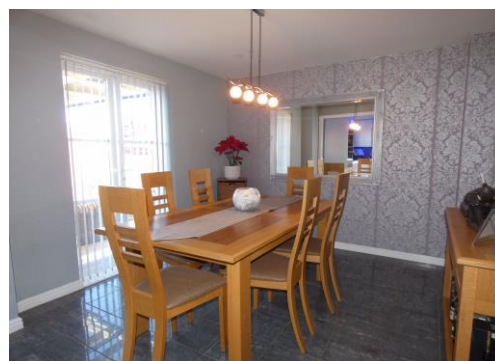
Double storage airing cupboard, loft access.

Rear

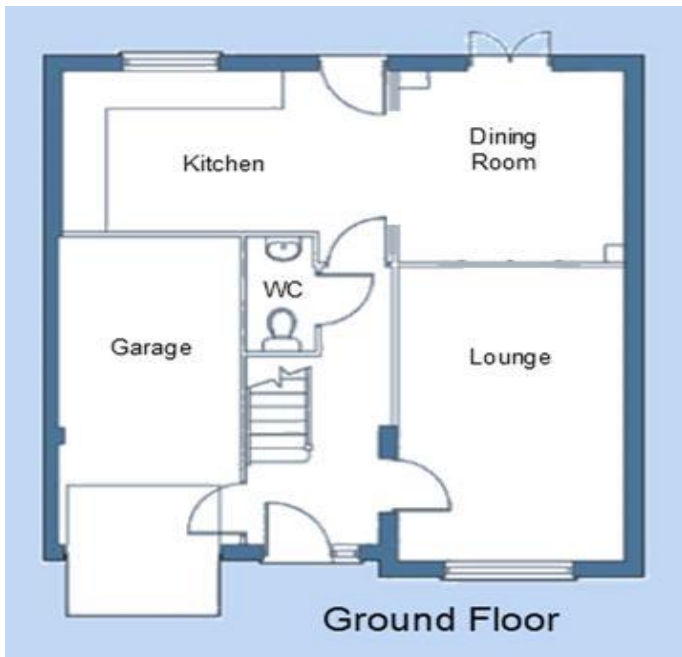
Externally

Rear garden with patio area. Not overlooked with open views

External views



These details are for guidance only and complete accuracy cannot be guaranteed. If there is at any point, which is of particular importance, verification should be obtained. They do not constitute a contract or part of a contract. All measurements are approximate. No guarantee can be given with regard to planning permissions or fitness for purpose. No apparatus, equipment, fixture or fitting has been tested. Items shown in photographs are NOT necessarily included. Interested Parties are advised to check availability and make an appointment to view before travelling to see a property.



KAN MOVE
Estate Agents

Kan Move Limited - Company no. 11972803
38 High Street, Spennymoor, Co. Durham, DL16 6DB
01388417270
info@kanmove.com
kanmove.com